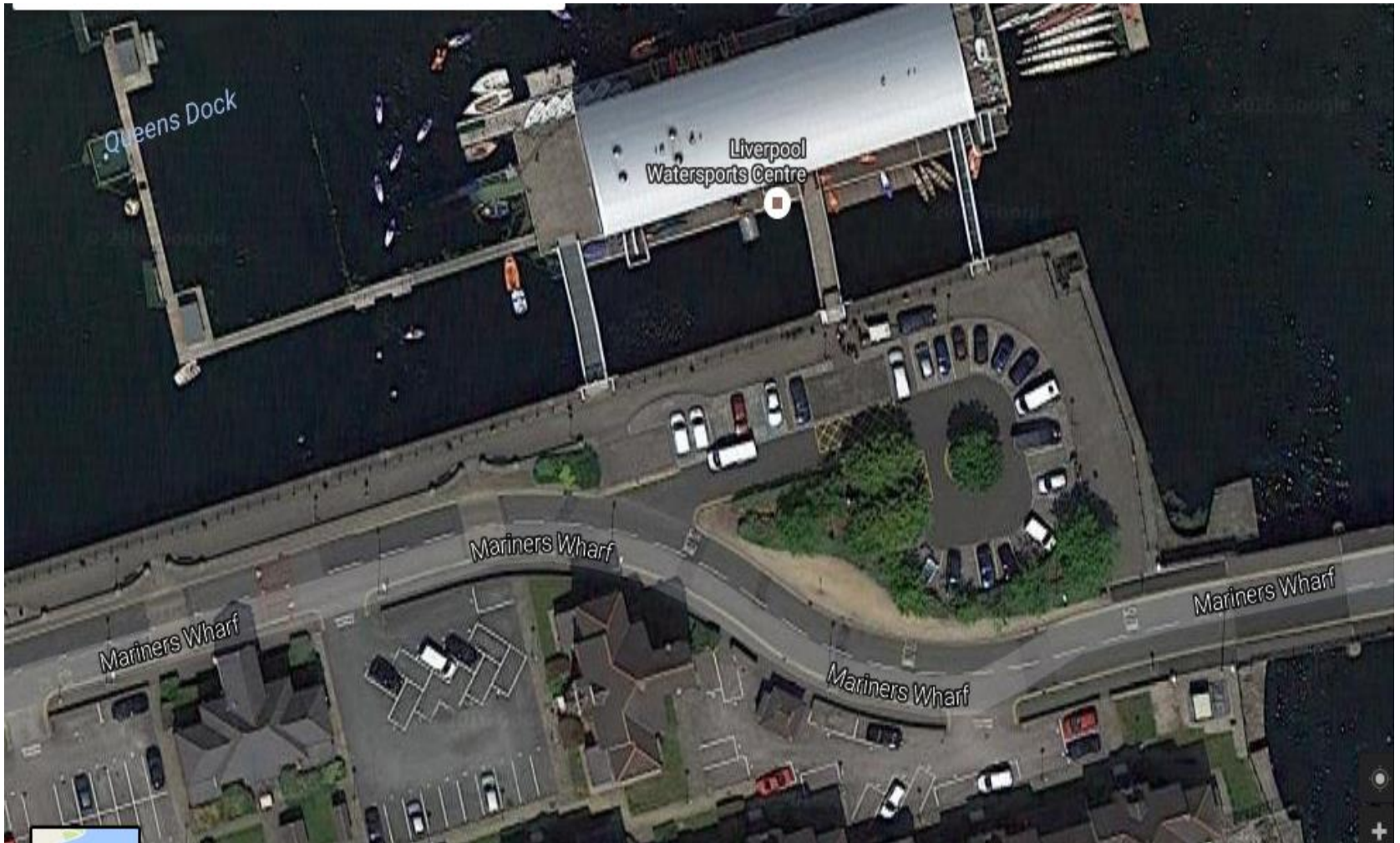


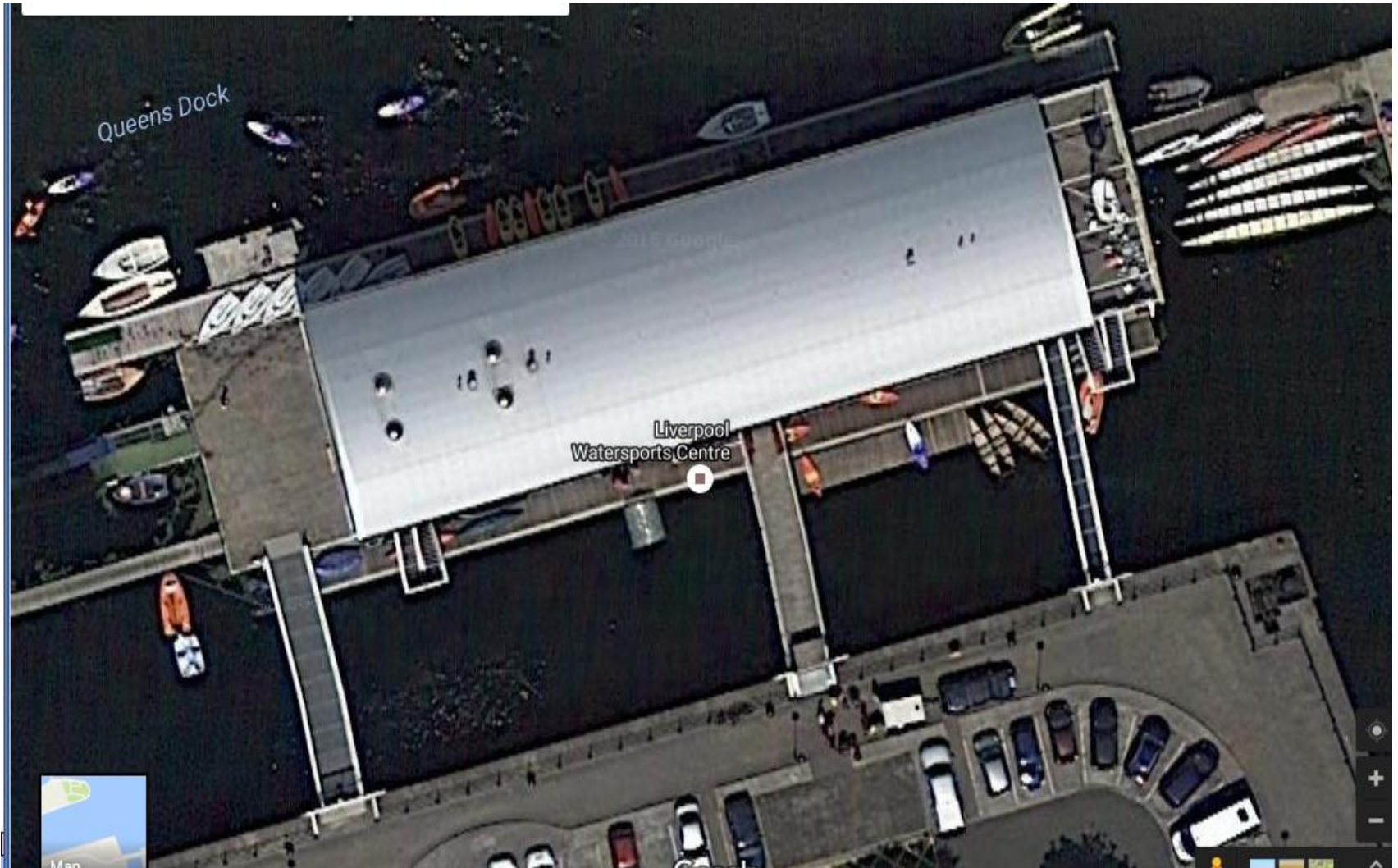
Liverpool southern dock, an Ariel view to show the position of the Watersports centre in the Queens Dock



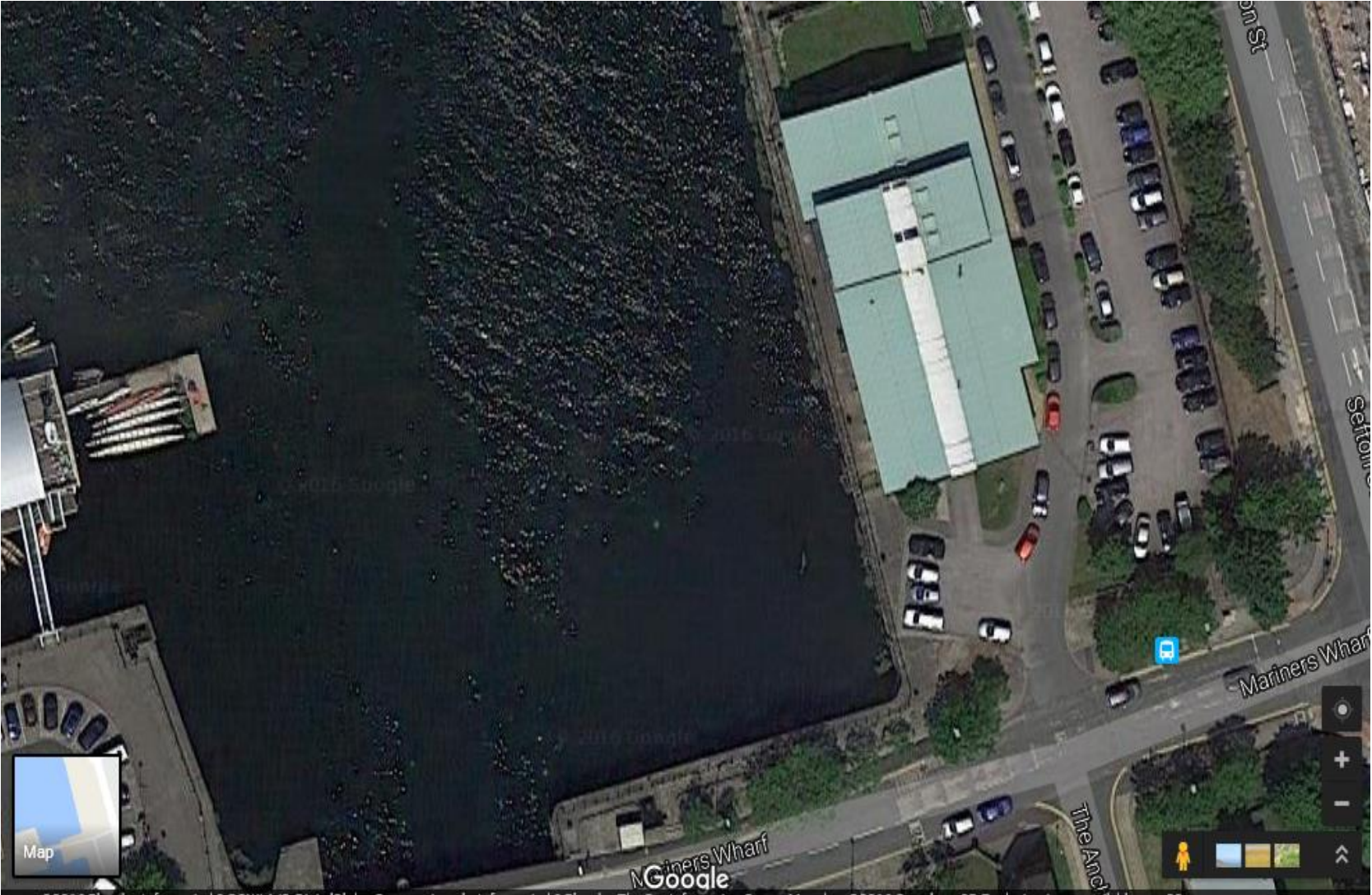
Ariel View to show area where crews can make camps.
This is a hard standing area and will not have cars parked



Liverpool Watersports centre, showing the loading pontoons that are available for the competing teams to load their boats



Ariel view to show additional parking area opposite the watersports centre, about 100m away



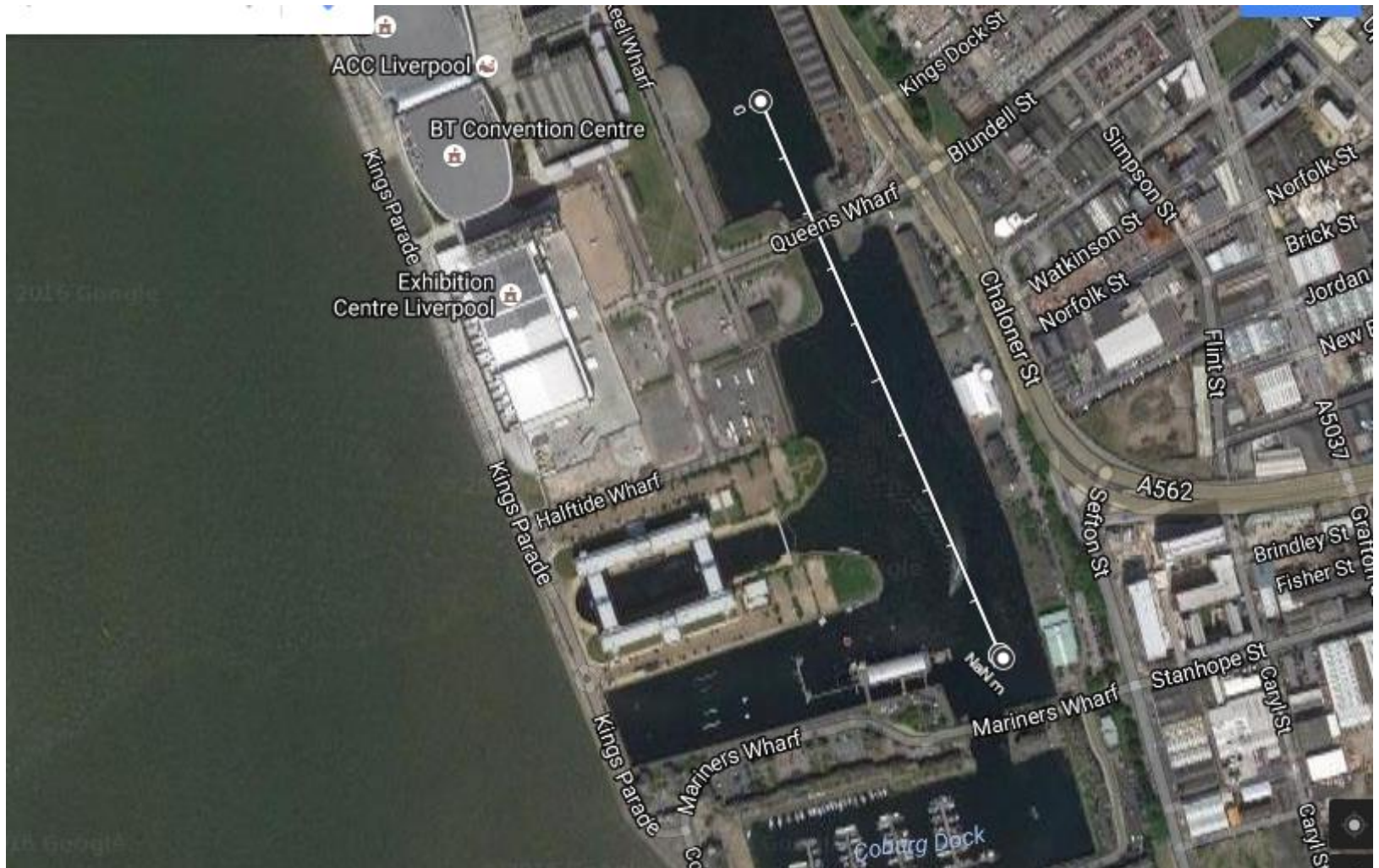
Ariel view of additional car parking area near to the Liverpool marina approximately 400m from the Watersports centre



Coburg warfe and slipway nearly 90m wide for boats to be unloaded and trailers parked free for the duration of the event



500m Course from Wapping Dock to Queens dock
A buoyed course, three lanes even and fair with a depth of 5m



Long distance race course, buoyed turns to left in areas which are over 70 wide to allow easy turning for any crews

